

- NOTES:**
- 1.INSTALLATION SHALL COMPLY WITH ALL APPLICABLE NATIONAL AND LOCAL ELECTRICAL REGULATIONS.
  - 2.REFER TO PRODUCT DOCUMENTATION FOR ADDITIONAL DETAILS PRIOR TO INSTALLATION AND SITE PREPARATION WORK.
  - 3.ALL DIMENSIONS ARE IN MILLIMETERS [INCHES].
  - 4.WEIGHT OF THE UNIT IS 145kg [319.7 lb].
  - 5.FRONT AND REAR CLEARANCE ARE FOR AIRFLOW AND SERVICE ACCESS, TOP AND RIGHT SIDE CLEARANCE ARE FOR SERVICE ACCESS ONLY.  
CONSULT WITH THE LOCAL SAFETY CODES AND STANDARDS FOR ANY ADDITIONAL REQUIREMENTS OF LOCAL AREA.  
IF THE UPS IS INSTALLED WITHOUT SIDE ACCESS, THE LENGTH OF CABLES CONNECTED TO THE UPS MUST ALLOW FOR ROLLING OUT THE UPS.
  - 6.COLOR: RAL 9003.
  - 7.PROTECTION CLASS: IP20.
  - 8.OPERATING TEMPERATURE: 0°C TO 40°C [32°F TO 104°F].

THIS DRAWING AND SPECIFICATIONS HEREIN ARE THE PROPERTY OF SCHNEIDER ELECTRIC AND SHALL NOT BE COPIED, REPRODUCED OR USED IN WHOLE OR IN PART, AS THE BASIS FOR THE MANUFACTURE OR SALE OF ITEMS WITHOUT WRITTEN PERMISSION FROM SCHNEIDER ELECTRIC. THIS DRAWING IS BASED UPON LATEST AVAILABLE INFORMATION AND IS SUBJECT TO CHANGE WITHOUT NOTICE.

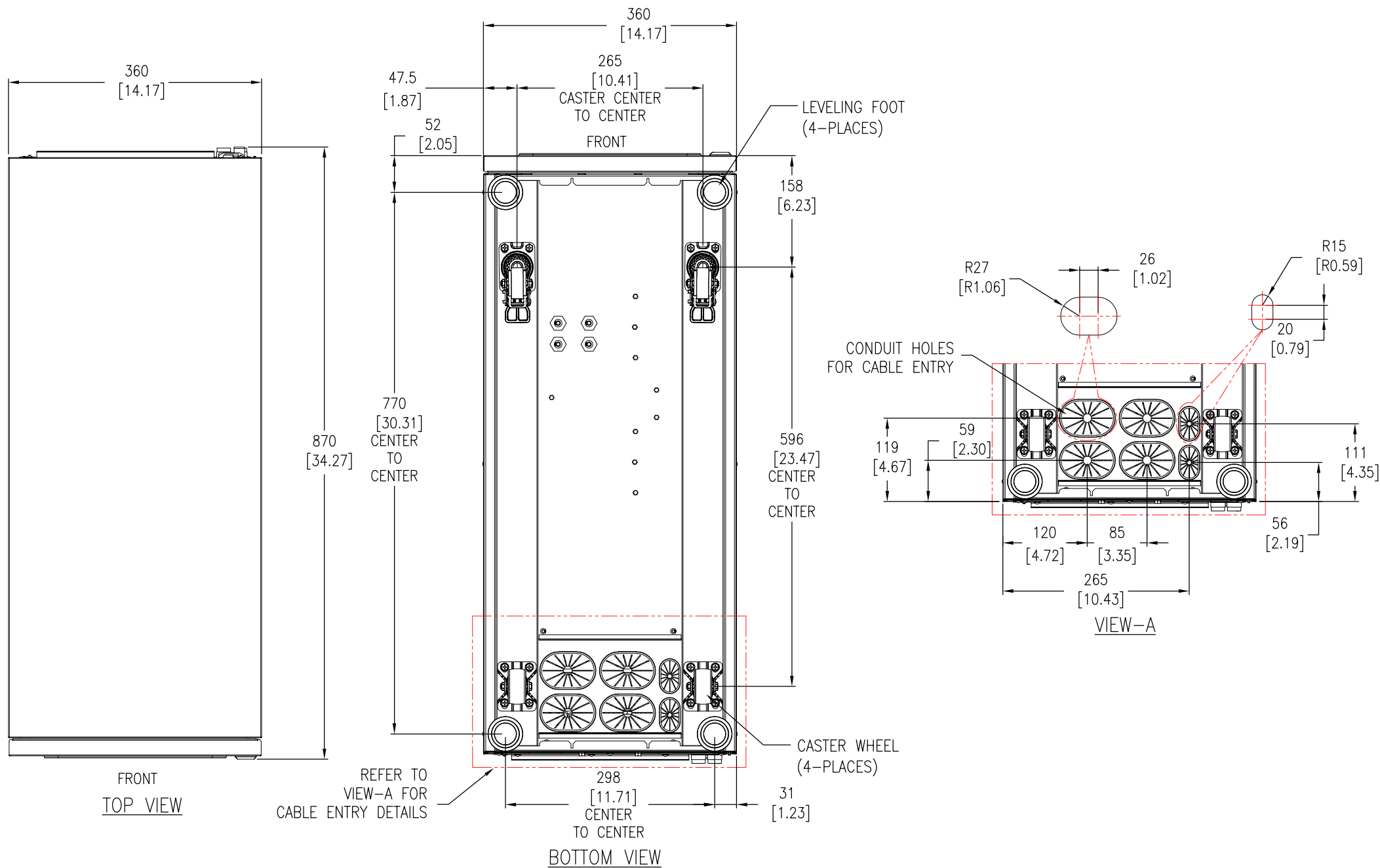
**Schneider Electric**

**TITLE:**  
Schneider Electric Easy UPS 3M  
100kVA, 400V, 3PH  
WITHOUT BATTERY MODULES  
GENERAL ARRANGEMENT

PROJECT: SUBMITTAL DRAWINGS SHEET 1 OF 6

**DWG NO:** E3MUPS100KH  
**DRAWN:** DIBYA/JAYAPRAKASH  
**ENGINEER:** Campbell BAI  
**APPROVED:** YaPing YANG

**REV.** 1  
**FIRST ANGLE PROJECTION**



- NOTES:**
- 1.INSTALLATION SHALL COMPLY WITH ALL APPLICABLE NATIONAL AND LOCAL ELECTRICAL REGULATIONS.
  - 2.REFER TO PRODUCT DOCUMENTATION FOR ADDITIONAL DETAILS PRIOR TO INSTALLATION AND SITE PREPARATION WORK.
  - 3.ALL DIMENSIONS ARE IN MILLIMETERS [INCHES].

THIS DRAWING AND SPECIFICATIONS HEREIN ARE THE PROPERTY OF SCHNEIDER ELECTRIC AND SHALL NOT BE COPIED, REPRODUCED OR USED IN WHOLE OR IN PART, AS THE BASIS FOR THE MANUFACTURE OR SALE OF ITEMS WITHOUT WRITTEN PERMISSION FROM SCHNEIDER ELECTRIC. THIS DRAWING IS BASED UPON LATEST AVAILABLE INFORMATION AND IS SUBJECT TO CHANGE WITHOUT NOTICE.

**Schneider Electric**

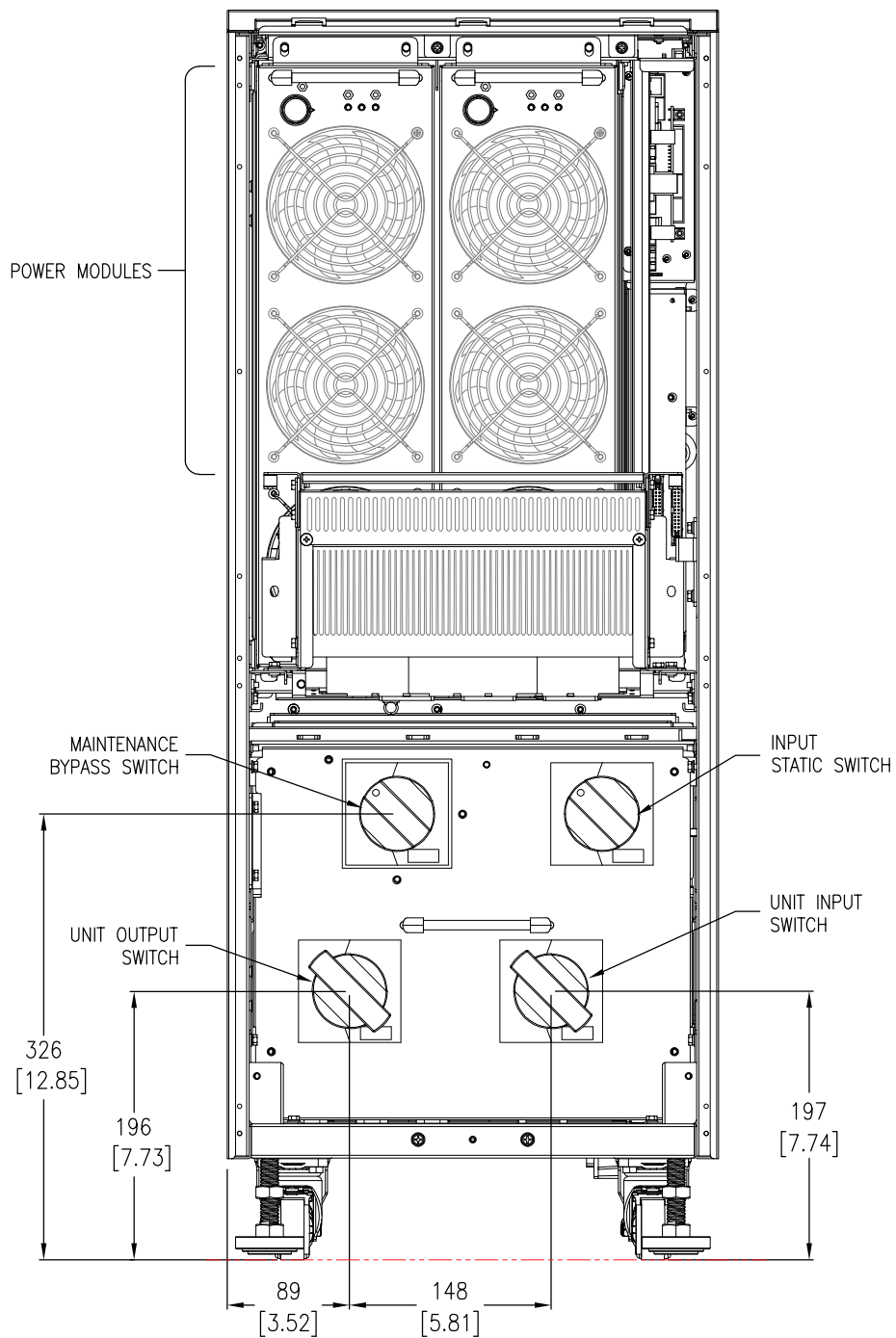
**TITLE:**  
Schneider Electric Easy UPS 3M  
100kVA, 400V, 3PH  
WITHOUT BATTERY MODULES  
TOP & BOTTOM VIEW

PROJECT: SUBMITTAL DRAWINGS SHEET 2 OF 6

**DWG NO:** E3MUPS100KH  
**DRAWN:** DIBYA/JAYAPRAKASH  
**ENGINEER:** Compbell BAI

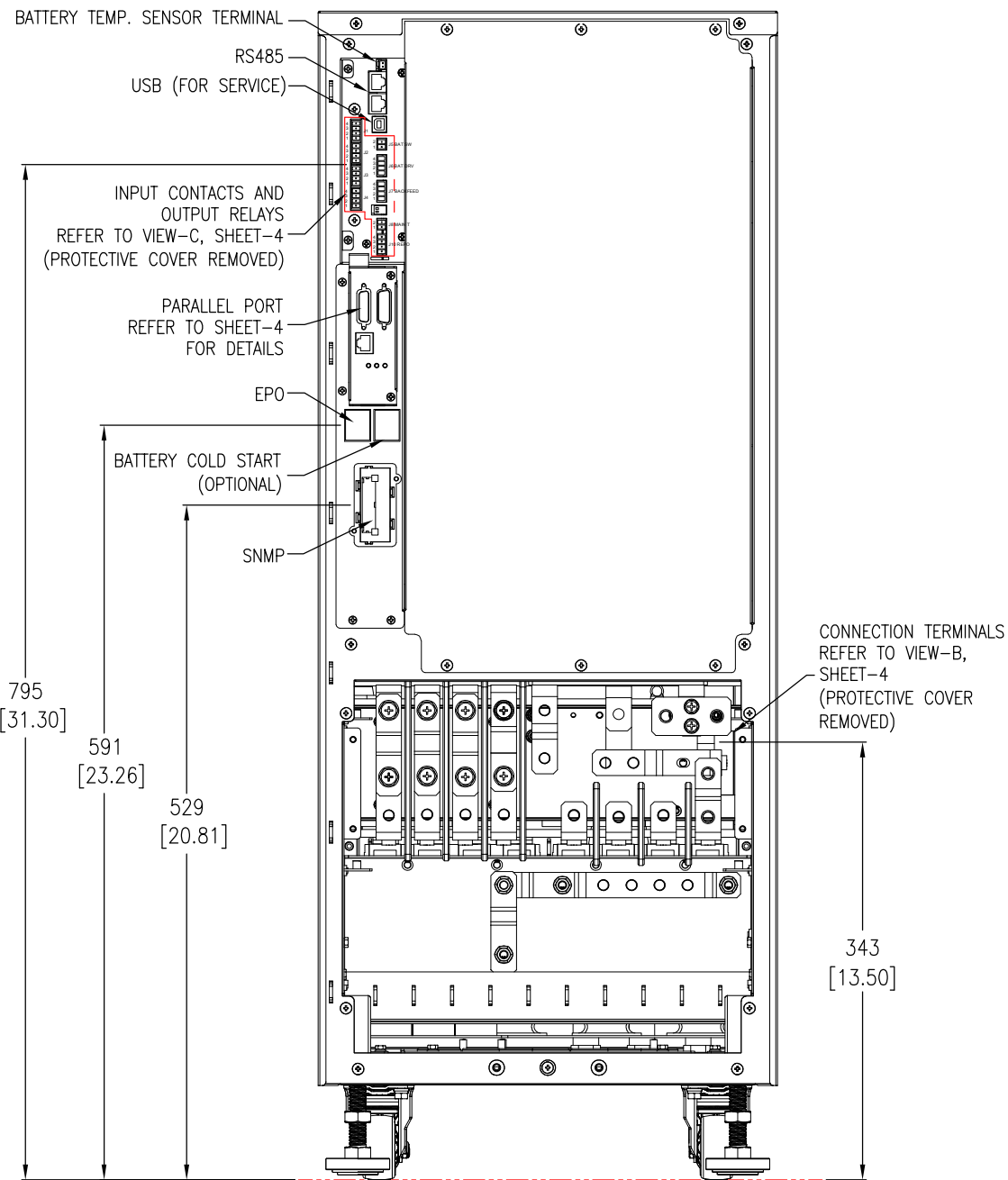
**APPROVED:** YaPing YANG

**REV.** 1  
**11-JUN-24**  
**11-JUN-24**  
**11-JUN-24**  
**FIRST ANGLE PROJECTION**



FRONT VIEW – INTERNAL

- NOTES:
1. INSTALLATION SHALL COMPLY WITH ALL APPLICABLE NATIONAL AND LOCAL ELECTRICAL REGULATIONS.
  2. REFER TO PRODUCT DOCUMENTATION FOR ADDITIONAL DETAILS PRIOR TO INSTALLATION AND SITE PREPARATION WORK.
  3. ALL DIMENSIONS ARE IN MILLIMETERS [INCHES].



REAR VIEW

THIS DRAWING AND SPECIFICATIONS HEREIN ARE THE PROPERTY OF SCHNEIDER ELECTRIC AND SHALL NOT BE COPIED, REPRODUCED OR USED IN WHOLE OR IN PART, AS THE BASIS FOR THE MANUFACTURE OR SALE OF ITEMS WITHOUT WRITTEN PERMISSION FROM SCHNEIDER ELECTRIC. THIS DRAWING IS BASED UPON LATEST AVAILABLE INFORMATION AND IS SUBJECT TO CHANGE WITHOUT NOTICE.

**Schneider Electric**

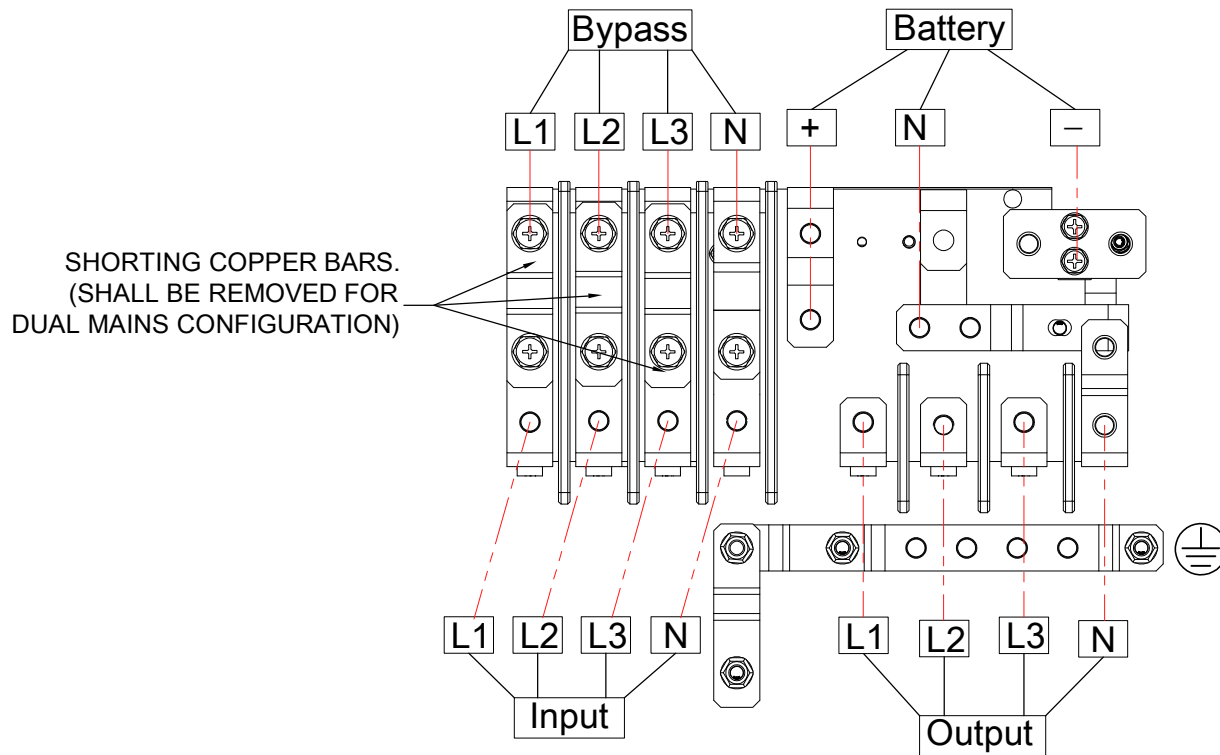
TITLE:  
Schneider Electric Easy UPS 3M  
100kVA, 400V, 3PH  
WITHOUT BATTERY MODULES  
INTERNAL FRONT AND REAR VIEW

PROJECT: SUBMITTAL DRAWINGS SHEET 3 OF 6

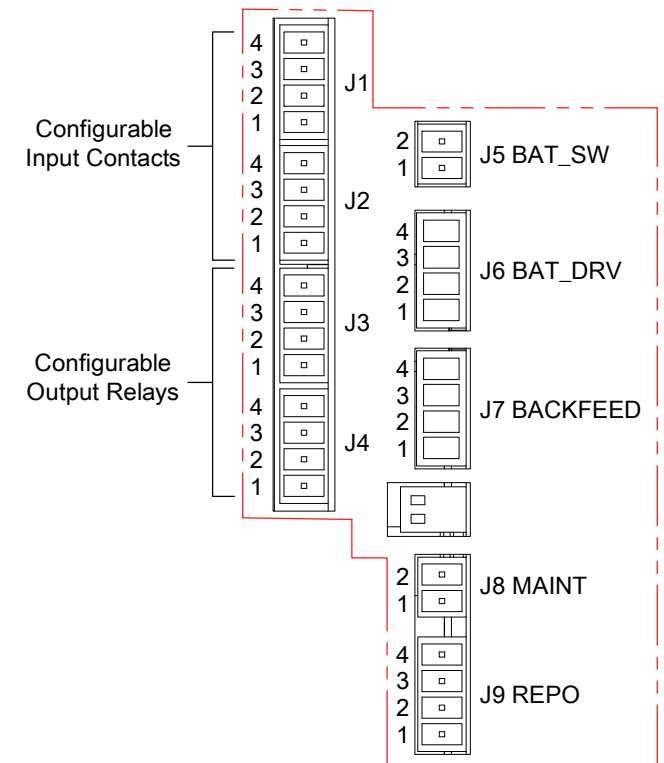
DWG NO: E3MUPS100KH  
DRAWN: DIBYA/JAYAPRAKASH  
ENGINEER: Ye YANG

APPROVED: Ye YANG/POSEIDON ZHU

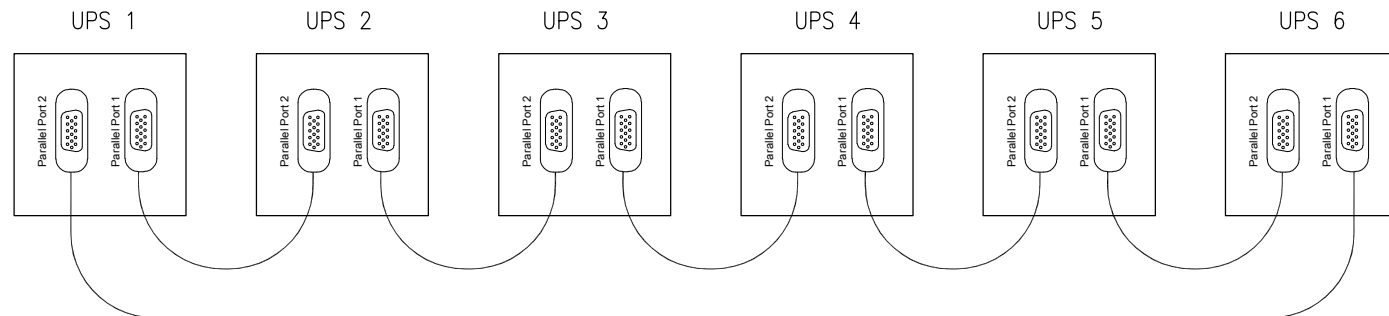
REV. 3  
11-JUN-24  
11-JUN-24  
11-JUN-24  
FIRST ANGLE PROJECTION



DETAIL-B, ENLARGED  
CONNECTION TERMINALS



VIEW-C (ENLARGED)  
INPUT CONTACTS AND OUTPUT RELAYS



PARALLEL CONNECTION

NOTES:

1. INSTALLATION SHALL COMPLY WITH ALL APPLICABLE NATIONAL AND LOCAL ELECTRICAL REGULATIONS.
2. REFER TO PRODUCT DOCUMENTATION FOR ADDITIONAL DETAILS PRIOR TO INSTALLATION AND SITE PREPARATION WORK.
3. UP TO 6 NUMBERS OF UPS CAN BE CONNECTED IN PARALLEL.  
MAXIMUM PARALLEL COMMUNICATION CABLE LENGTH IS 5.0METERS.

THIS DRAWING AND SPECIFICATIONS HEREIN ARE THE PROPERTY OF SCHNEIDER ELECTRIC AND SHALL NOT BE COPIED, REPRODUCED OR USED IN WHOLE OR IN PART, AS THE BASIS FOR THE MANUFACTURE OR SALE OF ITEMS WITHOUT WRITTEN PERMISSION FROM SCHNEIDER ELECTRIC. THIS DRAWING IS BASED UPON LATEST AVAILABLE INFORMATION AND IS SUBJECT TO CHANGE WITHOUT NOTICE.

**Schneider Electric**

TITLE:  
Schneider Electric Easy UPS 3M  
100kVA, 400V, 3PH  
WITHOUT BATTERY MODULES  
ENLARGED VIEWS AND DETAILS

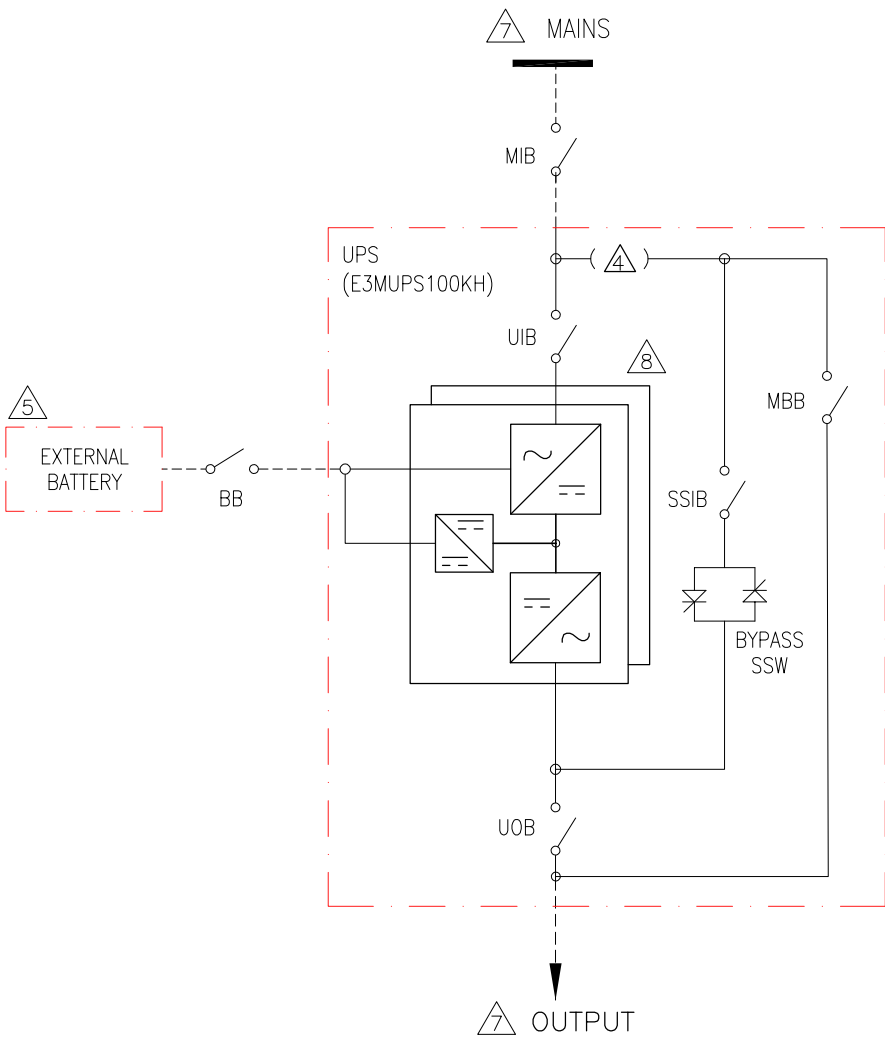
PROJECT: SUBMITTAL DRAWINGS SHEET 4 OF 6

DWG NO: E3MUPS100KH

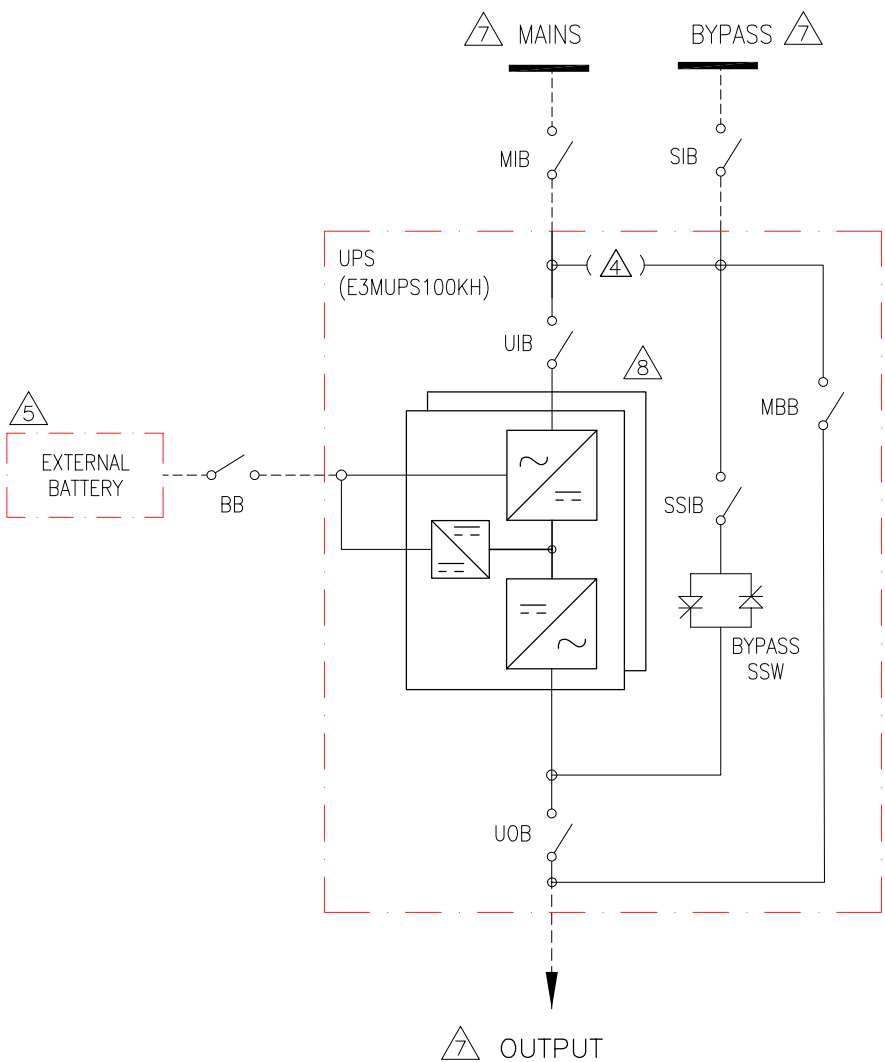
DRAWN:	JAYAPRAKASH	23-JAN-19
ENGINEER:	Compbell BAI	30-JAN-19
APPROVED:	YoPing YANG	30-JAN-19

REV.  
FIRST  
ANGLE  
PROJECTION

SINGLE MAINS CONFIGURATION



DUAL MAINS CONFIGURATION



- NOTES:
1. INSTALLATION SHALL COMPLY WITH ALL APPLICABLE NATIONAL AND LOCAL ELECTRICAL REGULATIONS.
  2. REFER TO PRODUCT DOCUMENTATION FOR ADDITIONAL DETAILS PRIOR TO INSTALLATION AND SITE PREPARATION WORK
  3. DRAWING DEPICTS POWER SYSTEM CONNECTIONS AND IT IS NOT REPRESENTATIVE OF PHYSICAL LAYOUT.
  4. SINGLE MAINS CONFIGURATION IS DEFAULT.  
FOR DUAL MAINS CONFIGURATION REMOVE THE 3 SHORTING COPPER BARS.
  5. BATTERIES CAN BE CONNECTED IN SERIES DEPENDING UPON THE RUNTIME REQUIREMENTS.
  6. UP TO 6 UPS CAN BE CONNECTED IN PARALLEL.
  7. REFER TO SHEET-6 FOR ELECTRICAL DATA.
  8. 2xPOWER MODULES RATED AT 50kVA. NOT SCALABLE BUT INTERNAL REDUNDANCY IS POSSIBLE DEPENDING UPON THE LOAD REQUIREMENT.
  9. CABLE LUGS ARE PROVIDED BY OTHERS.

LEGEND:  
----- CABLE PROVIDED BY OTHERS

THIS DRAWING AND SPECIFICATIONS HEREIN ARE THE PROPERTY OF SCHNEIDER ELECTRIC AND SHALL NOT BE COPIED, REPRODUCED OR USED IN WHOLE OR IN PART, AS THE BASIS FOR THE MANUFACTURE OR SALE OF ITEMS WITHOUT WRITTEN PERMISSION FROM SCHNEIDER ELECTRIC. THIS DRAWING IS BASED UPON LATEST AVAILABLE INFORMATION AND IS SUBJECT TO CHANGE WITHOUT NOTICE.

Schneider  
Electric

TITLE:  
Schneider Electric Easy UPS 3M  
100kVA, 400V, 3PH  
WITHOUT BATTERY MODULES  
SYSTEM ONLINE DIAGRAM

PROJECT: SUBMITTAL DRAWINGS SHEET 5 OF 6

DWG NO: E3MUPS100KH  
DRAWN: JAYAPRAKASH 09-NOV-21  
ENGINEER: Compbell BAI 09-NOV-21  
APPROVED: YoPing YANG 09-NOV-21

REV. 1  
FIRST  
ANGLE  
PROJECTION

ELECTRICAL DATA SHEET	
UPS RATING	100kVA
INPUT SPECIFICATIONS	
INPUT WIRING	3W+N+PE
INPUT VOLTAGE (V)	380/400/415
NOMINAL INPUT CURRENT (A)	160/152/146
MAXIMUM INPUT CURRENT (A)	186/177/170
INPUT CURRENT LIMITATION (A)	258
INPUT FREQUENCY (Hz)	40 - 70
INPUT POWER FACTOR	>0.99
MAXIMUM INPUT SHORTCIRCUIT WITHSTAND (kA)	Icw=10
PROTECTION	FUSE
RAMP-IN (SECONDS)	7
INPUT THDI -LINEAR LOAD	< 3%
BYPASS SPECIFICATIONS	
BYPASS WIRING	3W+N+PE
OVERLOAD CAPACITY	110% FOR 60 MINUTES
	130% FOR 10 MINUTES
	130-150% FOR 1 MINUTE
	>150% FOR 1200 MILLISECONDS
BYPASS VOLTAGE (V)	380/400/415
MINIMUM BYPASS VOLTAGE (V)	266/280/291
MAXIMUM BYPASS VOLTAGE (V)	475/480/477
NOMINAL BYPASS CURRENT (A)	152/144/139
BYPASS FREQUENCY (Hz)	50/60
MAXIMUM INPUT SHORTCIRCUIT WITHSTAND (kA)	Icw=10
OUTPUT SPECIFICATIONS	
OUTPUT WIRING	3W+N+PE
OVERLOAD CAPACITY AT 30°C	110% FOR 60 MINUTES
	125% FOR 10 MINUTES
	150% FOR 1 MINUTE
	>150% FOR 1200 MILLISECONDS
OUTPUT VOLTAGE (V)	380/400/415 (±1%)
NOMINAL OUTPUT CURRENT (A)	152/144/139
OUTPUT FREQUENCY (Hz)	50/60
OUTPUT POWER FACTOR	1
OUTPUT THDU	<3%@ 100% LINEAR LOAD, < 5%@ 100% NON-LINEAR LOAD
BATTERY SPECIFICATIONS	
CHARGING POWER IN % OF OUTPUT POWER	1-24%
MAXIMUM CHARGING POWER (W)	24000
NOMINAL BATTERY VOLTAGE (32-50 Blocks) (VDC)	±192 to ±300
NOMINAL FLOAT VOLTAGE (32-50 Blocks) (VDC)	±215.5 to ±337.5
END OF DISCHARGE VOLTAGE (32-50 Blocks) (VDC)	±153.6 to ±240
BATTERY CURRENT AT FULL LOAD AND NOMINAL BATTERY VOLTAGE (36-50 Blocks) (A)	245-175
BATTERY CURRENT AT FULL LOAD AND MINIMUM BATTERY VOLTAGE (36-50 Blocks) (A)	308-221
TEMPERATURE COMPENSATION (PER CELL) IF THE TEMPERATURE IS ABOVE 28°C	PROGRAMMABLE FROM 0-7mV. DEFAULT IS 3mV
RIPPLE CURRENT	<5% C10

RECOMMENDED CABLE SIZES			
	CABLE SIZE PER PHASE (mm <sup>2</sup> )	NEUTRAL CABLE SIZE (mm <sup>2</sup> )	PE CABLE SIZE (mm <sup>2</sup> )
INPUT	70	2x70	35
BYPASS	70		35
OUTPUT	70	2x70	35
BATTERY	2x70	-	70

- NOTES:
- 1.INSTALLATION SHALL COMPLY WITH ALL APPLICABLE NATIONAL AND LOCAL ELECTRICAL REGULATIONS.
  - 2.REFER TO PRODUCT DOCUMENTATION FOR ADDITIONAL DETAILS PRIOR TO INSTALLATION AND SITE PREPARATION WORK.

THIS DRAWING AND SPECIFICATIONS HEREIN ARE THE PROPERTY OF SCHNEIDER ELECTRIC AND SHALL NOT BE COPIED, REPRODUCED OR USED IN WHOLE OR IN PART, AS THE BASIS FOR THE MANUFACTURE OR SALE OF ITEMS WITHOUT WRITTEN PERMISSION FROM SCHNEIDER ELECTRIC. THIS DRAWING IS BASED UPON LATEST AVAILABLE INFORMATION AND IS SUBJECT TO CHANGE WITHOUT NOTICE.



TITLE:  
Schneider Electric Easy UPS 3M  
100kVA, 400V, 3PH  
WITHOUT BATTERY MODULES  
ELECTRICAL DATA

PROJECT: SUBMITTAL DRAWINGS SHEET 6 OF 6

DWG NO: E3MUPS100KH

DRAWN: JAYAPRAKASH 29-MAR-19

ENGINEER: Compbell BAI 29-MAR-19

APPROVED: YaPing YANG 29-MAR-19

REV. 1

ANGLE

PROJECTION

N.A